

Third meeting of the Standing Committee on DRR and Public Services

24-26 January 2022

Implementation of the African Road Map for improving access and use of DRR info for Early Warning and Early Action, including for Transboundary Risk Management

Luca Rossi



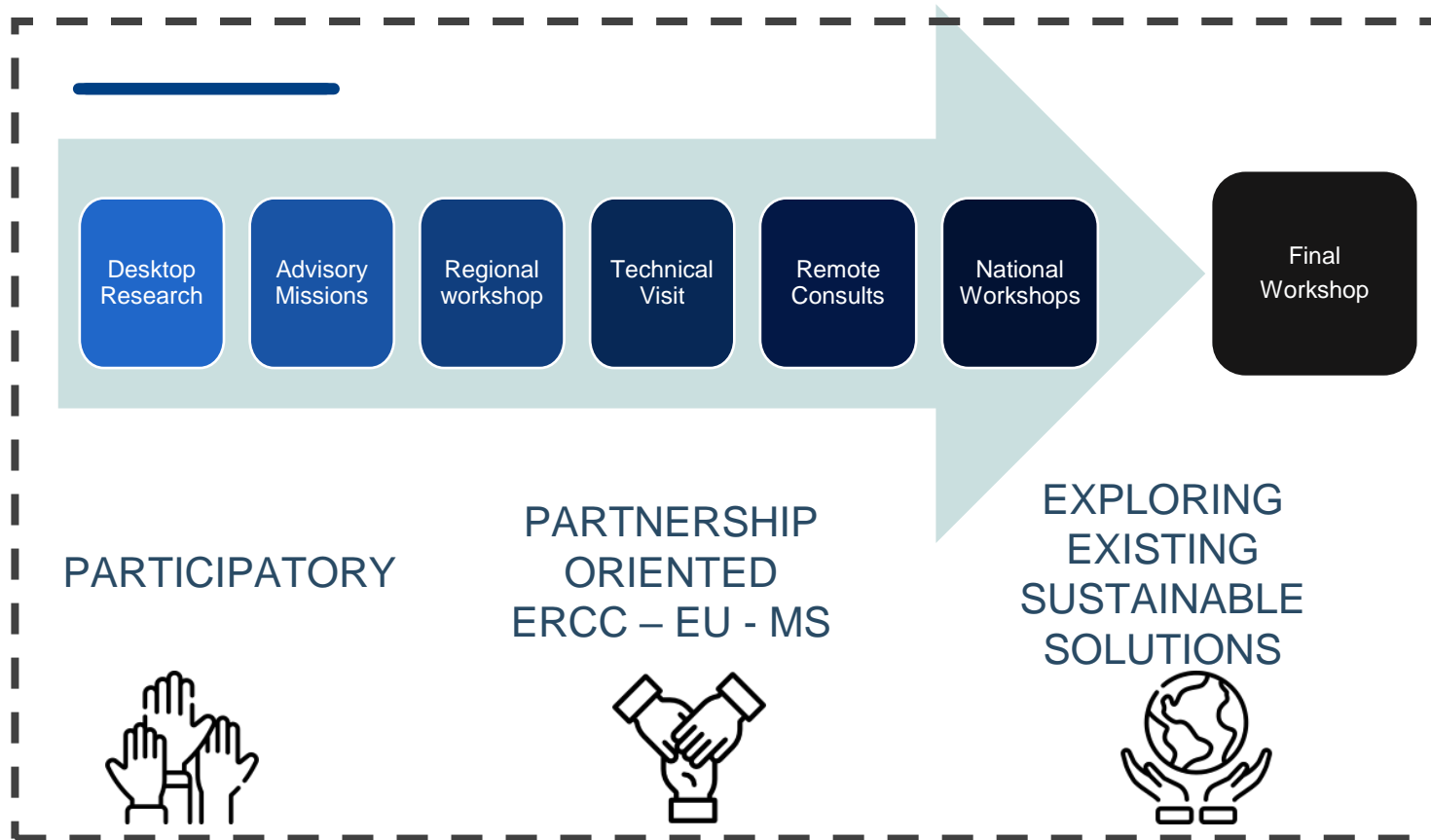
UNDRR

UN Office for Disaster Risk Reduction

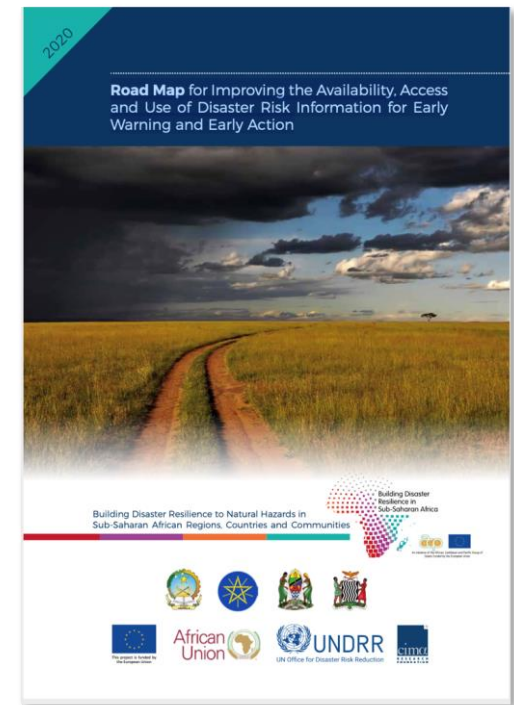


SENDAI FRAMEWORK
FOR DISASTER RISK REDUCTION 2015-2030

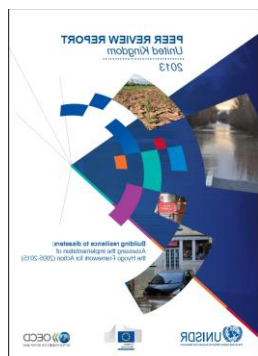
The process



Inspired by the EU



Supported by the EU



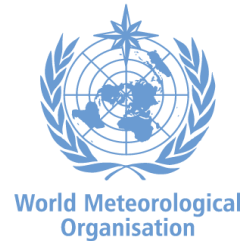
WHAT RISK INFORMATION FOR DISASTER RISK REDUCTION & RESILIENCE ?



Country led process For Ownership and Sustainability

Data and information exchange platform

- **Endorsed** by WMO and **available** to any WMO member
- **Open-sources** software platform
- Designed, operationally **maintained** and further developed with regular budget beyond projects' duration
- Able to ingest and analyse non Hydromet data and info
- **Primary or complementary** system

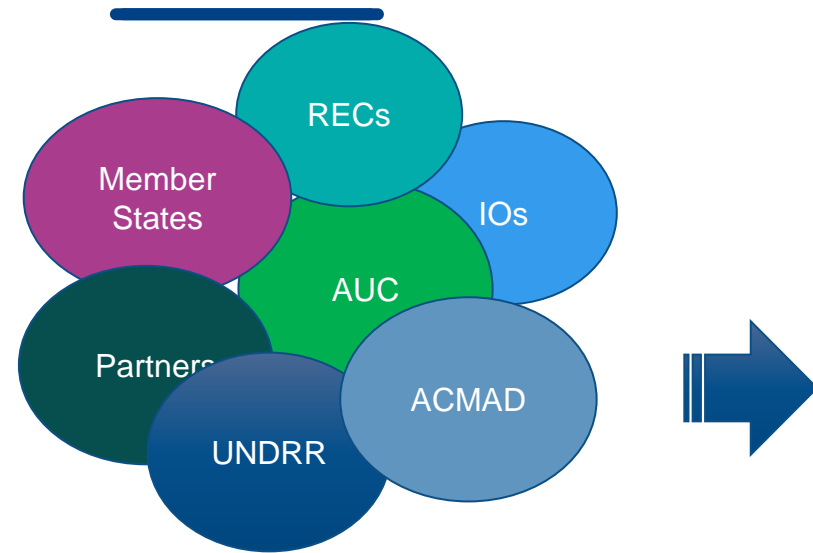


Instrumental for:

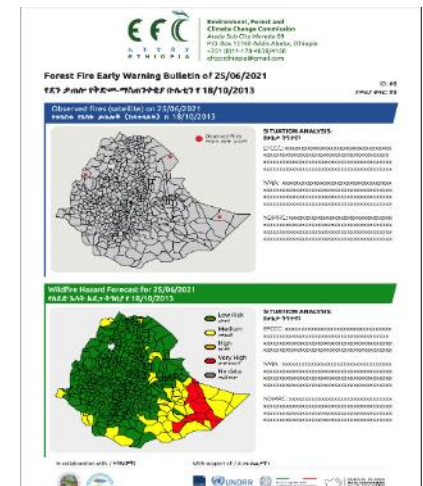
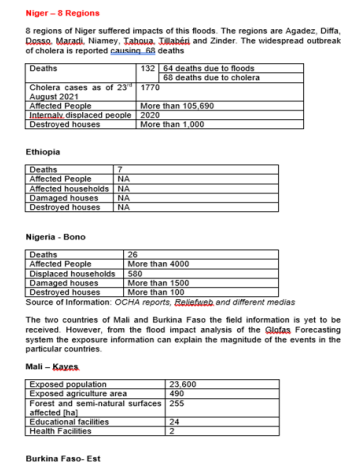
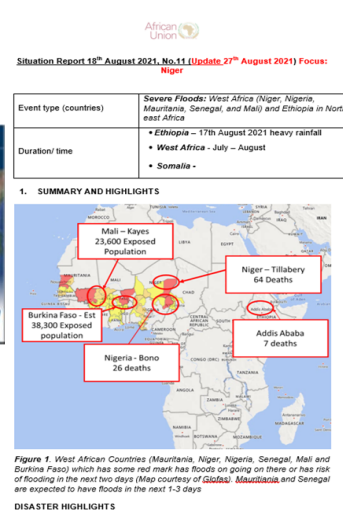
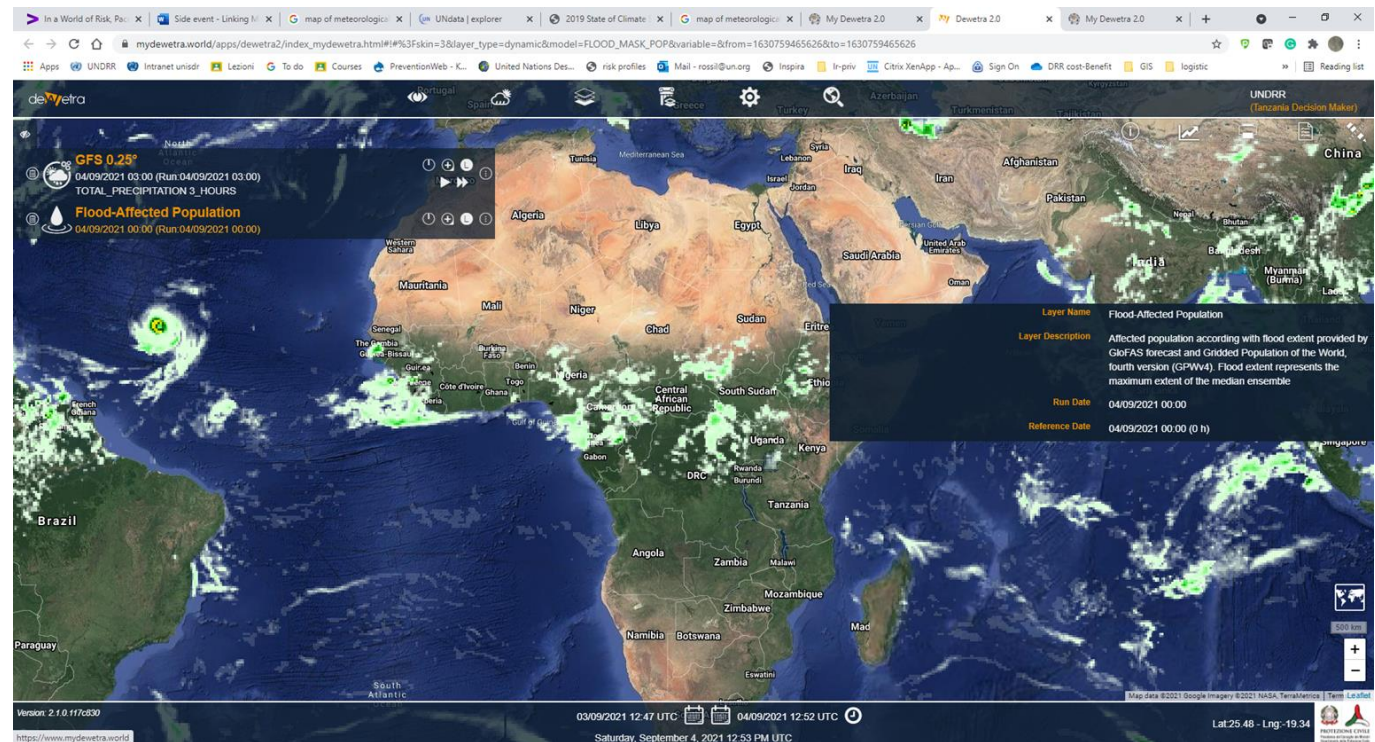
- Participatory approach
- Link up EW to E&AA
- Transboundary risk management



Establishing a Common Methodology for DRM

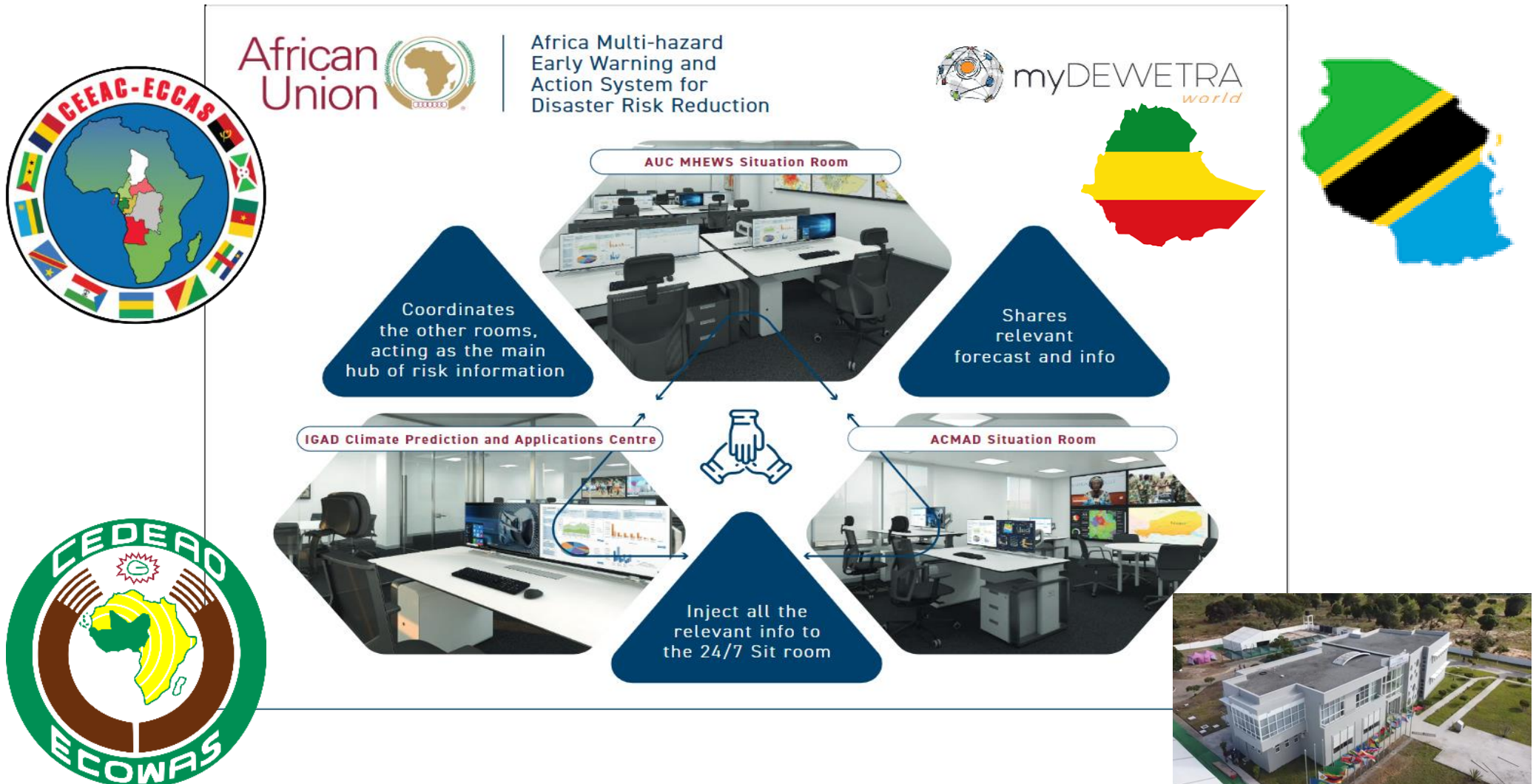


Africa Framework for Multi-Hazard Early Warning Systems and Early Action
Endorsed by the High Level and Ministerial session in November 2021



Results...

Operational network linking AUC, ACMAD and ICPAC



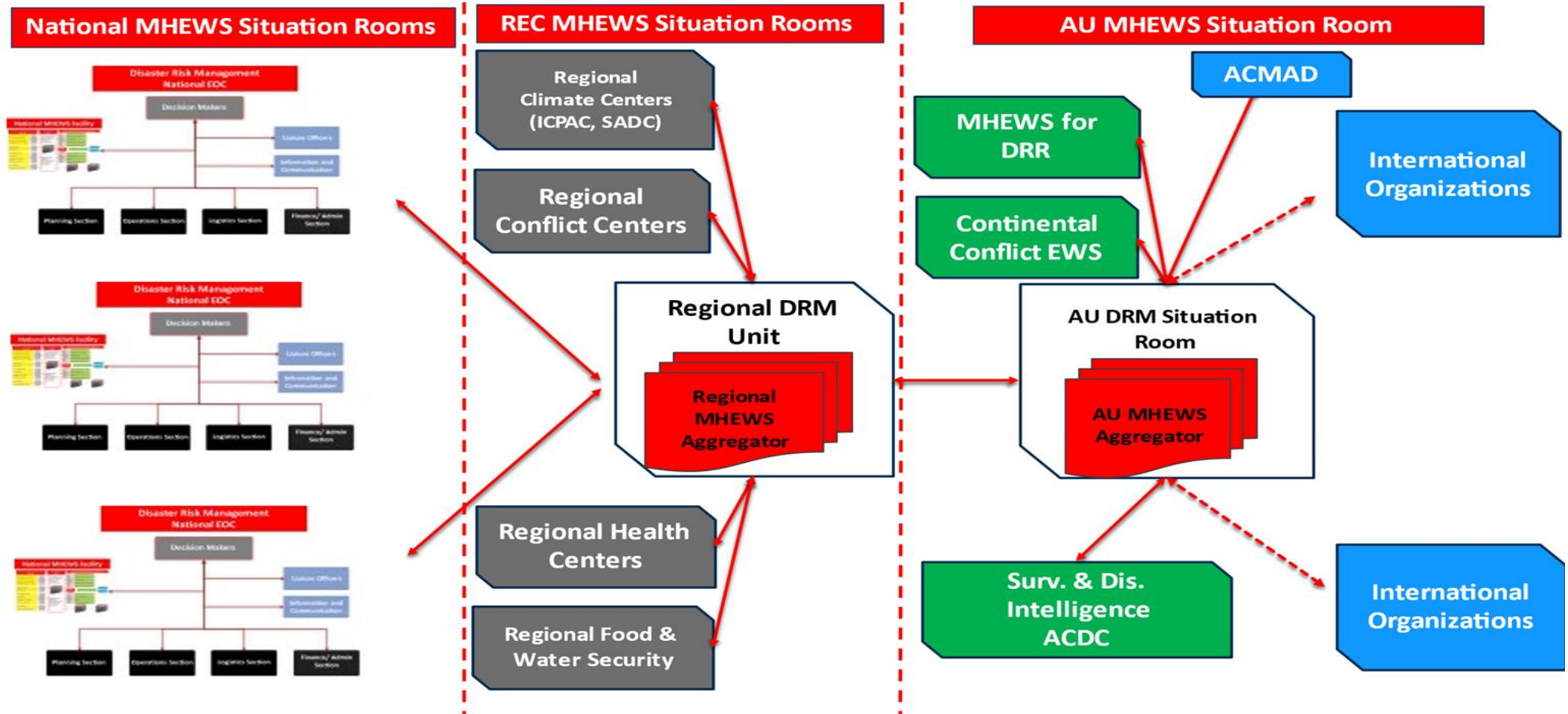
Political process in lead up to the development of the Framework

- The Framework for Multi-Hazard Early Warning System (MHEWS) and Early Action is a product of previous decisions and commitments of the African Union:
 - **Protocol relating to the Establishment of the AU Peace and Security Council and**
 - **African Peace and Security Architecture, in particular (Article 6 (b), (e), (f), Article 12 (4), Article 13 (3) (f) and Article 15) emphasize early warning, prevention, humanitarian action and disaster management.**
- The **African Union Executive Council at its 28th session, January 2017 [EX.CL/Dec.943 (XXX)**, endorsed the Programme of Action (PoA) for the Implementation of the Sendai Framework for Disaster Risk Reduction 2015-2030 in Africa, and the Mauritius Declaration on the Implementation of the Sendai Framework in Africa.

The AU Heads of State and Government (Assembly/AU/Decl.1(XXXIII)) at the 33-ordinary session of the Assembly, 09-10 February 2020 Addis Ababa, Ethiopia ENCOURAGED Member States to take measures to strengthen their national systems on disaster-related displacement, disaster risk and reduction and Early Warning in line with the Sendai Framework, the African Regional Strategy for Disaster Risk Reduction and the Programme of Action for the Implementation of the Sendai Framework for the Disaster Risk Reduction 2015-2030 in Africa.

Model: Towards an Interoperable MHEWS by 2030

Criteria for Activation	Continental Level Action
<p>National Warning triggered by National EWS Service or targeting specific geographical areas within a MS.</p> <p>Relatively low impact, routine, events which can be managed by communities with no major risk of escalation or</p>	<ul style="list-style-type: none"> No action required. General monitoring by Situation Room.
<p>Warning triggered by National EWS Service for significant events which may have potential to impact multiple administrative areas within a MS.</p> <p>Events with potential of very significant consequences which require regional monitoring and forecasting and may potentially require regional resources in support of the local level depending on the</p>	<ul style="list-style-type: none"> No formal action required. General monitoring by Situation Room and provision of advice or guidance on request.
<p>Warning triggered when the REC MHEWS Situation Room identifies the potential impact that can exceed the coping capacity of the MS and requires regional support and related supranational coordination. These events determine transboundary impacts/ anticipated impacts even if the event affected more than 1 MS. This may be triggered by information from regional hazard monitoring services, or from a MS.</p> <p>Warning to be issued to all impacted/ potentially impacted MS within the region. A neighbouring MS from another REC may be impacted, and a warning may be issued through the Continental MHEWS Situation Room.</p>	<ul style="list-style-type: none"> Partial activation of the Situation Room. Monitor the situation with the involved REC(s). Evaluate the situation and escalate to Level 4 Warning if required. Issue Situation Reports to impacted REC Situation Rooms to monitor the situation. Inform so that they may initiate pre-emptive Early Actions as required.
<p>Warning issued by the AMHEWS Situation Room for the most severe events which may potentially exceed the coping capacity of the affected MS and require international support and related supranational coordination. These events are extremely likely to result in regional transboundary impacts.</p> <p>Warning for the most severe hazards with potential for continental impacts, likely to require international support and related supranational coordination and RECs with significant consequences.</p>	<ul style="list-style-type: none"> Full activation of the Situation Room to coordinate information from multiple sources, liaison with RECs on transboundary impacts or anticipated impacts. If a disaster occurs, ensure data and information on hazards being monitored continues to be provided to the Continental Disaster Coordination Centre. Issue regular Situation Reports on hazards and early warnings issued, and on Early Actions taken, for AUC Bodies, AUC Senior Decision Makers and International Partners.



Asante Sana

Thank you

Gracias

Merci

Shukran

Obrigado

谢谢

Thank You

